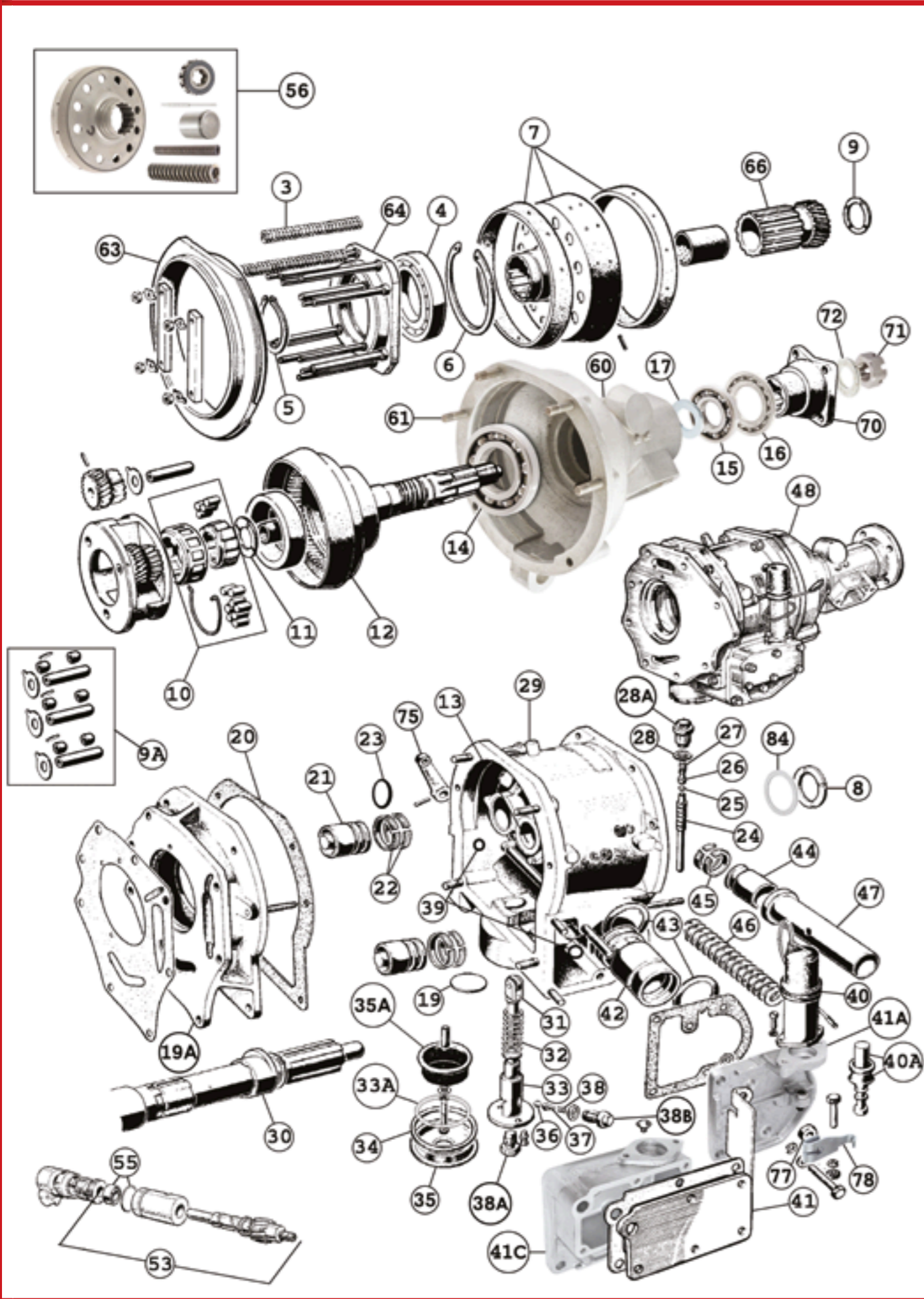


No.	Part No.	Description	Application	Notes	Price ex VAT
3	OVD103	CLUTCH RETURN SPRING(set)	BN1-BJ8		£26.75
4	OVD104	BEARING-clutch thrust	BN1-BJ8		£24.35
4	OVD104HQ	BEARING-clutch thrust- H/QUAL BRANDED	BN1-BJ8	HIGH QUALITY BRANDED BEARING	£105.00
5	OVD105	CIRCLIP-EXTERNAL(small)	BN1-BJ8		£2.95
6	OVD106	CIRCLIP-EXTERNAL(large)	BN1-BJ8		£3.50
7	OVD107	CLUTCH SLIDING MEMBER-ex.only	BN1-BJ8	£75 surcharge	£115.50
8	OVD115	THRUST WASHER,FRONT-sun wheel	BN1-BJ8		£7.80
9	OVD116	THRUST WASHER,REAR-sun wheel	BN1-BJ8		£7.75
9A	OVD118	PLANET CARRIER REPAIR KIT	BN1-BJ8		£62.50
10	OVD123	UNI-DIRECTIONAL CLUTCH-compl.	BN1-BJ8		£82.50
11	OVD128	THRUST WASHER-unidirect.clutch	BN1-BJ8		£9.50
13	OVD133	CENTRE BUSH-o/d main body-pair	BN1-BJ8	PAIR	£33.50
14	OVD134	BEARING,FRONT-annulus	BN1-BJ8		£12.75
14	OVD134HQ	BEARING,FRONT-annulus - H/QUAL BRANDED	BN1-BJ8	HIGH QUALITY BRANDED BEARING	£48.00
15	OVD135	BEARING,REAR-annulus	BN1-BJ8		£11.50
15	OVD135HQ	BEARING,REAR-annulus - H/QUAL BRANDED	BN1-BJ8	HIGH QUALITY BRANDED BEARING	£16.50
16	OVD136	OIL SEAL-rear	BN1-BJ8	USE.GBS191	-
17	OVD137	SPACING WASHER - .146"	BN2-BJ8		£6.95
17	OVD137A	SPACING WASHER - .151"	BN2-BJ8		£6.95
17	OVD137B	SPACING WASHER - .156"	BN2-BJ8		£6.95
17	OVD137C	SPACING WASHER - .161"	BN2-BJ8		£6.95
17	OVD137D	SPACING WASHER - .166"	BN2-BJ8		£6.95
17	OVD137E	SPACING WASHER - .171"	BN2-BJ8		£6.95
17	OVD137F	SPACING WASHER - .176"	BN2-BJ8		£6.95
19	OVD145	CORE PLUG	BN1-BJ8		£4.95
19A	OVD146	OVERDRIVE ADAPTOR PLATE-USED	BN2-BN7	SIDE CHANGE	£178.00
19A	OVD147	OVERDRIVE ADAPTOR PLATE-USED	BN7-BJ8	CENTRE CHANGE	£178.00
19A	OVD147N	OVERDRIVE ADAPTOR PLATE-NEW	BN7-BJ8	CENTRE CHANGE	£205.00
20	OVD148	GASKET-adaptor plate	BN1-BJ8		£1.50
21	OVD150	PISTON-operating	BN1-BJ8		£12.75
22	OVD151	OPERATING PISTON RING SET	BN1-BT7	TO.22/3009/607	£21.00
23	OVD152	OPERATING PISTON 'O'RING	BT7-BJ8	22/3009/608-ON	£0.45
24	OVD155	OPERATING VALVE	BN1-BJ8		£15.25
25	OVD156	BALL-operating valve	BN1-BJ8	USE.GBS115	-
26	OVD157	PLUNGER-ball valve	BN1-BJ8		£2.90
27	OVD158	SPRING-plunger	BN1-BJ8		£2.85
28	OVD159	WASHER-plug	BN1-BJ8		£0.58
28A	OVD160	VALVE PLUG	BN1-BJ8		£9.50
29	OVD162	BREATHER	BN1-BJ8		£4.75
30	OVD164	OPERATING CAM-oil pump	BN1-BJ8		£32.50
31	OVD165	PLUNGER,ROLLER ASSY.-oil pump	BN1-BJ8		£44.50
32	OVD166	PUMP SPRING	BN1-BJ8		£2.75
33	OVD167	BODY-oil pump	BN1-BJ8		£53.50
33A	OVD172	MAGNETIC WASHER-drain plug	BT7-BJ8		£2.60
34	OVD173	WASHER-drain plug	BT7-BJ8		£1.58
35	OVD174	DRAIN PLUG(O/D22/3009/8745-on)	BT7-BJ8		£41.50
35A	OVD175	STRAINER-oil pump	BN1-BJ8		£16.15
36	OVD180	BALL-non return valve	BN1-BJ8		£0.45
37	OVD181	PLUNGER-non return valve	BN1-BJ8	USE.OVD157	-



No.	Part No.	Description	Application	Notes	Price ex VAT
38	OVD182	SPRING-non return valve	BN1-BJ8	USE.OVD158	-
38A	OVD183	PLUG - pump body base	BN1-BJ8		£4.95
38B	OVD184	PLUG - non return valve	BN1-BJ8		£9.85
39	OVD185	'O'RING-operating shaft	BN1-BJ8		£0.50
40	OVD192	SOLENOID	BN1-BJ8	USE.ELS136	-
40A	OVD193	PLUNGER & GAITER-solenoid	BN1-BJ8	USE.ELS157	-
41	OVD195	COVER-SOLENOID BRACKET COVER	BT7-BJ8		£10.95
41A	OVD196	BRACKET - SOLENOID	BN2-BN6		£65.00
41C	OVD197	BRACKET - SOLENOID	BN7-BJ8		£59.95
42	OVD200	ACCUMULATOR HOUSING	BN1-BJ8		£35.25
43	OVD201	'O'RING-accumulator housing	BN1-BJ8		£1.50
44	OVD202	PISTON-accumulator	BN1-BJ8	LESS RINGS	£18.50
44	OVD202A	O-RING CONVERSION-accumulator piston	BN1-BJ8	INC PISTON & HOUSING	£110.00
45	OVD203	RING SET-accumulator piston	BN1-BJ8		£41.50
46	OVD205	PRESSURE SPRING-accumulator	BN1-BJ8		£15.75
47	OVD206	TUBE-pressure spring	BN1-BJ8		£7.80
48	OVD209	OVERDRIVE UNIT-reconditioned	BN1	EXCHANGE £650 surcharge	£595.00
48	OVD209A	OVERDRIVE UNIT-reconditioned	BN1	OUTRIGHT SALE	£1,495.00
48	OVD210	OVERDRIVE UNIT-reconditioned	BN2-BN6	28%(EXCHANGE) £650 surcharge	£595.00
48	OVD210A	OVERDRIVE UNIT-reconditioned	BN2-BN6	28%(OUTRIGHT)	£1,495.00
48	OVD211	OVERDRIVE UNIT-reconditioned	BT7-BJ8	22%(EXCHANGE) £650 surcharge	£595.00
48	OVD211A	OVERDRIVE UNIT-reconditioned	BT7-BJ8	22%(OUTRIGHT)	£1,495.00
48	OVD212	OVERDRIVE UNIT - UPRATED	BN2-BJ8 (28%)	FAST ROAD(OUTRIGHT)	£1,495.00
53	OVD215A	PINION GEAR & BEARING ASSY	BN2-BN6	28%	£99.50
53	OVD216	PINION GEAR & BEARING ASSY	BT7-BJ8	22%	£94.85
55	OVD218	OIL SEAL & 'O' RING	BN2-BJ8	28% & 22%	£6.25
56	OVD220	UPRATED OVERDRIVE KIT	BN2-BJ8	FAST ROAD	£329.50
56	OVD221	UPRATED OVERDRIVE KIT	BN2-BJ8	FULL RACE	£275.00
60	OVD225	OVERDRIVE REAR CASING	BN2-BJ8		£260.00
61	OVD226	STUD - rear casing to front casing	BN2-BJ8		£1.15
63	OVD228	OVERDRIVE CLUTCH BRAKE RING	BN1-BJ8		£129.50
66	OVD231	SUNWHEEL 28%	BN1-BN6	BN1 FROM O/D28/1292/1	£58.75
70	OVD235	FLANGE - coupling	BN1.155283-BJ8		£78.50
71	OVD236	NUT - flange to annulus	BN1-BJ8		£7.85
72	OVD237	WASHER - flange to annulus	BN1-BJ8		£1.20
75	OVD240	LEVER - valve setting	BN1-BJ8		£9.50
77	OVD242	DISTANCE COLLAR - valve operating shaft	BN1-BJ8		£2.20
78	OVD243	LEVER - solenoid	BN2-BJ8		£14.50
84	OVD248A	WASHER-sunwheel adjusting front .113"-.114"	BN1-BJ8	2.87MM-2.89MM	£7.95
84	OVD248B	WASHER-sunwheel adjusting front .107"-.108"	BN1-BJ8	2.71MM-2.74MM	£7.95
84	OVD248C	WASHER-sunwheel adjusting front .101"-.102"	BN1-BJ8	2.56MM-2.59MM	£7.95
84	OVD248D	WASHER-sunwheel adjusting front .095"-.096"	BN1-BJ8	2.4MM-2.43MM	£7.95
84	OVD248E	WASHER-sunwheel adjusting front .089"-.090"	BN1-BJ8	2.26MM-2.28MM	£7.95



Machined and modified piston and housing replaces the original steel ring sets with a rubber O-ring. This will increase pressure and reduce bore wear to give a vast improvement to reliability and performance.

OVD202A