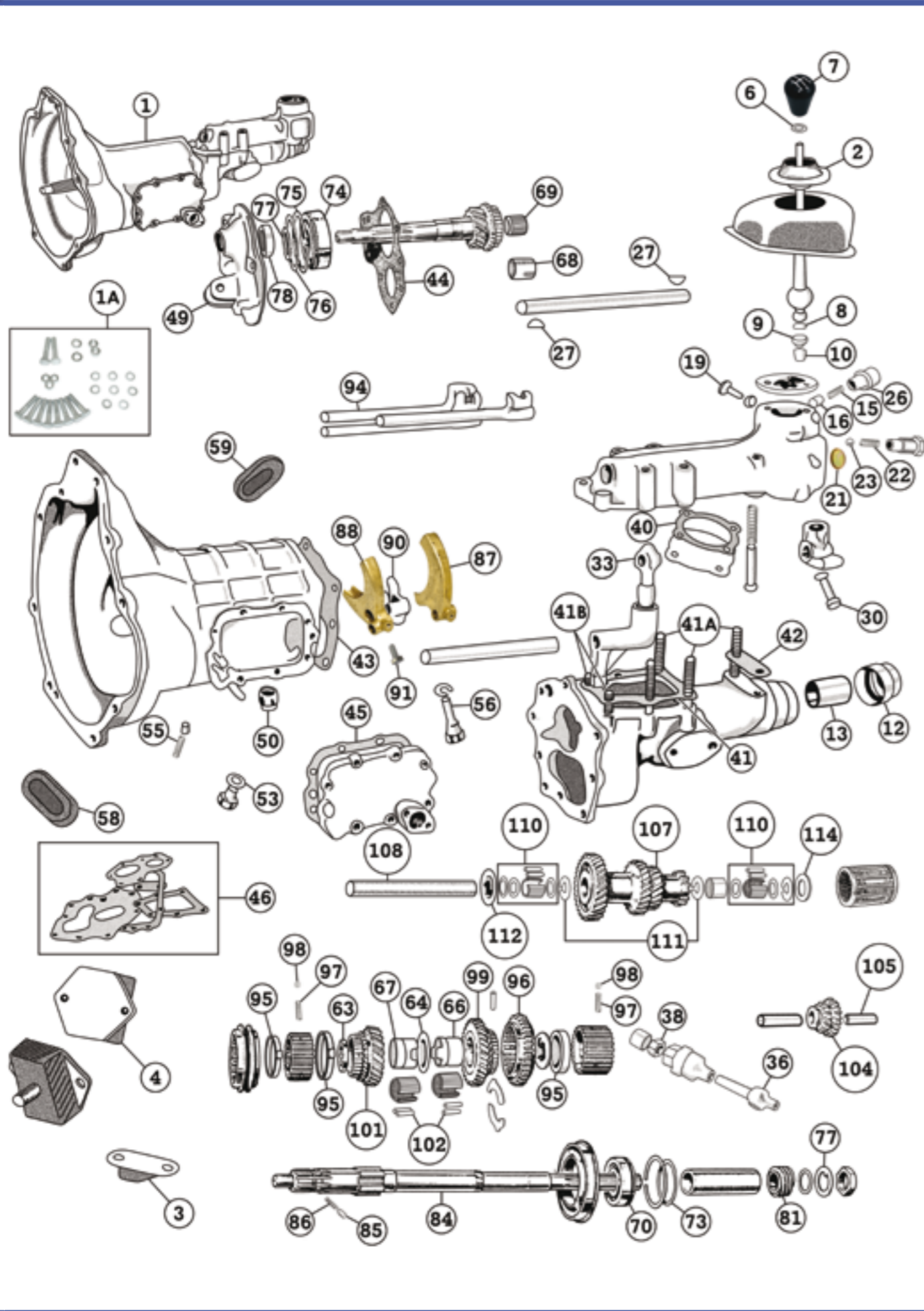
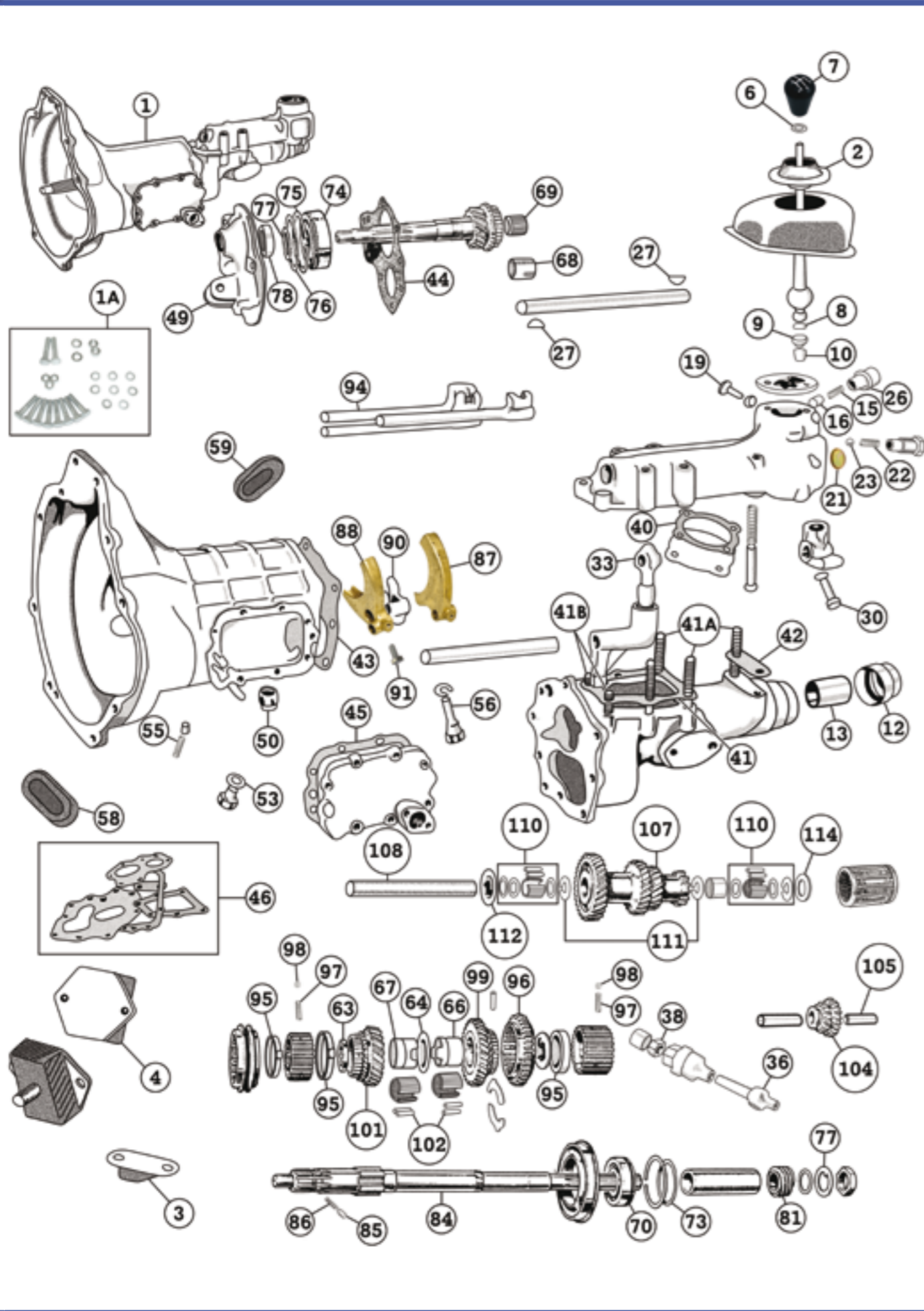


GEARBOX



No.	Part No.	Description	Application	Notes	Price ex VAT
1	XGBX101	GEARBOX-RECONDITIONED	948CC	EXCHANGE ONLY £300 surcharge	£425.00
1	XGBX102	GEARBOX-RECONDITIONED	1098CC	EXCHANGE ONLY £300 surcharge	£425.00
1	XGBX103	GEARBOX-RECONDITIONED	1275CC	EXCHANGE ONLY £300 surcharge	£425.00
1A	XGBX104	BOLT KIT - engine to gearbox	948CC		£5.50
1A	XGBX104A	BOLT KIT - engine to gearbox	1098CC		£4.80
2	XGBX105	GEAR LEVER GAITER-rubber	MK1-HAN9		£3.25
3	XGBX110	BUFFER-gearbox mounting	MK1-MK4		£2.85
4	XGBX111	MOUNTING-gearbox	MK1-MK4		£3.80
6	XGBX113	LOCKNUT-gear lever knob	MK1-MK2		£0.19
7	XGBX114	KNOB-gear lever	MK1-MK4	UP TO SPLIT BUMPER	£9.25
8	XGBX116	'O' RING-gear lever	MK1-MK4		£0.20
9	XGBX117	BUTTON-gear lever	MK1-MK4		£2.75
10	XGBX118	SPRING-gear lever	MK1-MK4		£0.60
12	XGBX120	OIL SEAL - rear	MK1-MK4		£4.75
13	XGBX121	BUSH-prop shaft sliding joint	MK1-MK4		£5.75
15	XGBX123	SPRING-gear lever locating	MK1-MK4		£0.43
16	XGBX124	PLUNGER-anti-rattle	MK1 TO 9C-H25508		£5.10
16	XGBX125	PLUNGER-anti-rattle	MK1 9C-H25509-MK4		£0.98
19	XGBX131	LOCATER-gear lever	MK1-MK4		£2.35
21	XGBX133	CORE PLUG	MK1-MK4		£0.65
22	XGBX135	SPRING-reverse selector	MK1-MK4		£1.10
23	XGBX136	BALL-reverse selector	MK1-MK4	USE.GBS115	-
26	XGBX139	WASHER-spring retaining cap	MK1-MK4		£0.80
27	XGBX141	KEY-woodruff	MK1-MK4		£0.45
30	XGBX145	SCREW-rear selector	MK1-MK4		£0.20
36	XGBX152	SPEEDO PINION	948CC-1275CC		£105.00
38	XGBX154	OIL SEAL-speedo pinion	MK1-MK4		£2.60
40	XGBX156	GASKET-lower cover	MK1-MK4		£0.85
41	XGBX157	GASKET-remote-front	MK1-MK4		£0.35
41A	XGBX158	STUD REMOTE-long	MK1-MK4		£1.50
41B	XGBX158A	STUD REMOTE-short	MK1-MK4		£1.10
42	XGBX159	GASKET-remote-rear	MK1-MK4		£0.39
43	XGBX160	GASKET-rear	MK1-MK4		£0.70
44	XGBX161	GASKET-front	948CC		£0.75
44	XGBX162	GASKET-front	1098CC-1275CC		£0.39
45	XGBX163	GASKET-side cover	MK1-MK4		£0.52
46	XGBX165	GASKET SET-complete	MK1-MK4		£3.50
49	XGBX168	COVER-front	1098CC-1275CC		£99.50
50	XGBX170	PLUG-drain & filler	MK1-MK4		£5.35
53	XGBX173	WASHER-plunger plug	MK1-MK4	USE.XENG487	-
55	XGBX175	SPRING-plunger	MK1-MK4	USE.XGBX135	-
56	XGBX176	SCREW-reverse shaft locking	MK1-MK4		£0.48
58	XGBX178	DUST RUBBER-l/h side	MK1-MK4		£1.85
59	XGBX179	DUST RUBBER-top	1098CC-1275CC		£4.95
63	XGBX191	THRUST WASHER-front-.214'-.215	9CC ONLY		£3.25
64	XGBX195	RING-interlocking	9CC ONLY		£11.25
66	XGBX196	BUSH-2ND GEAR	9CC ONLY		£26.50
67	XGBX197	BUSH-3RD GEAR	9CC ONLY		£23.65
68	XGBX198	BUSH - 3rd motion shaft	9CC ONLY		£3.25
69	XGBX199	BUSH - 3rd motion shaft	9CG-1275CC		£2.95
70	XGBX200	BEARING-mainshaft	948CC		£9.45
70	XGBX201	BEARING-mainshaft	1098CC-1275CC		£13.95



No.	Part No.	Description	Application	Notes	Price ex VAT
73	XGBX204	SHIM-front bearing-0.004'	948CC-1275CC		£1.35
73	XGBX205	SHIM-front bearing-0.006'	948CC-1275CC		£0.79
73	XGBX206	SHIM-front bearing-0.010'	948CC-1275CC		£1.20
74	XGBX208	BEARING - 1st motion shaft	ALL	USE.XGBX200	-
76	XGBX210	SHIM - bearing - 0.004'	A/R	USE.XGBX204	-
76	XGBX211	SHIM - bearing - 0.006'	A/R	USE.XGBX205	-
76	XGBX212	SHIM - bearing - 0.010'	A/R	USE.XGBX206	-
77	XGBX213	LOCKTAB - 1st & 3rd motion shafts	948CC-1275CC		£2.95
78	XGBX214	NUT - 1st motion shaft	948CC-1098CC		£0.85
81	XGBX217	GEAR - speedometer drive	948CC-1275CC		£8.95
85	XGBX221	PEG - locating	948CC-1275CC		£4.50
86	XGBX222	SPRING - locating	1098CC-1275CC		£1.95
87	XGBX223	SELECTOR FORK-(1ST/2ND)	1098CC-1275CC		£21.95
88	XGBX224	SELECTOR FORK-(3RD/4TH)	948CC		£39.95
90	XGBX226	SELECTOR FORK-(REVERSE)	948CC-1275CC		£28.50
91	XGBX227	BOLT-selector fork	948CC-1275CC		£2.70
94	XGBX230	SELECTOR ROD-(REVERSE)	1098CC-1275CC		£7.25
95	XGBX232	BAULK RING	1098CC-1275CC		£6.60
96	XGBX236	FIRST GEAR-outer only	1275CC		£58.00
97	XGBX237	SPRINGS - syncromesh	1098CC-1275CC		£0.58
98	XGBX238	BALLS - syncromesh	948CC-1275CC		£0.19
99	XGBX240	2ND GEAR	1098CC(MK3)-1275CC		£45.00
101	XGBX242	3RD GEAR	1098CC-10CC H4561		£63.00
101	XGBX243	3RD GEAR	10CC H4561-1275CC		£63.00
102	XGBX244	NEEDLE ROLLERS-(2ND & 3RD)	1098CC(MK2)-1275CC		£0.42
104	XGBX246	REVERSE GEAR	1098CC(MK2)		£43.50
104	XGBX247	REVERSE GEAR	1098CC(MK3)-1275CC		£59.50
105	XGBX248	BUSH-reverse gear	1098CC(MK2)		£2.15
107	XGBX250	LAYGEAR	1098CC(MK3)-1275CC		£135.00
108	XGBX252	LAYSHAFT	948CC-1275CC		£14.95
110	XGBX254	BEARINGS - laygear	948CC-1275CC		£3.95
111	XGBX255	CIRCLIP - laygear	948CC-1275CC		£1.15
114	XGBX262	THRUST WASHER-rear-.123'-.124'	948CC-1275CC		£5.25
114	XGBX265	THRUST WASHER-rear-.130'-.131'	948CC-1275CC		£5.25

