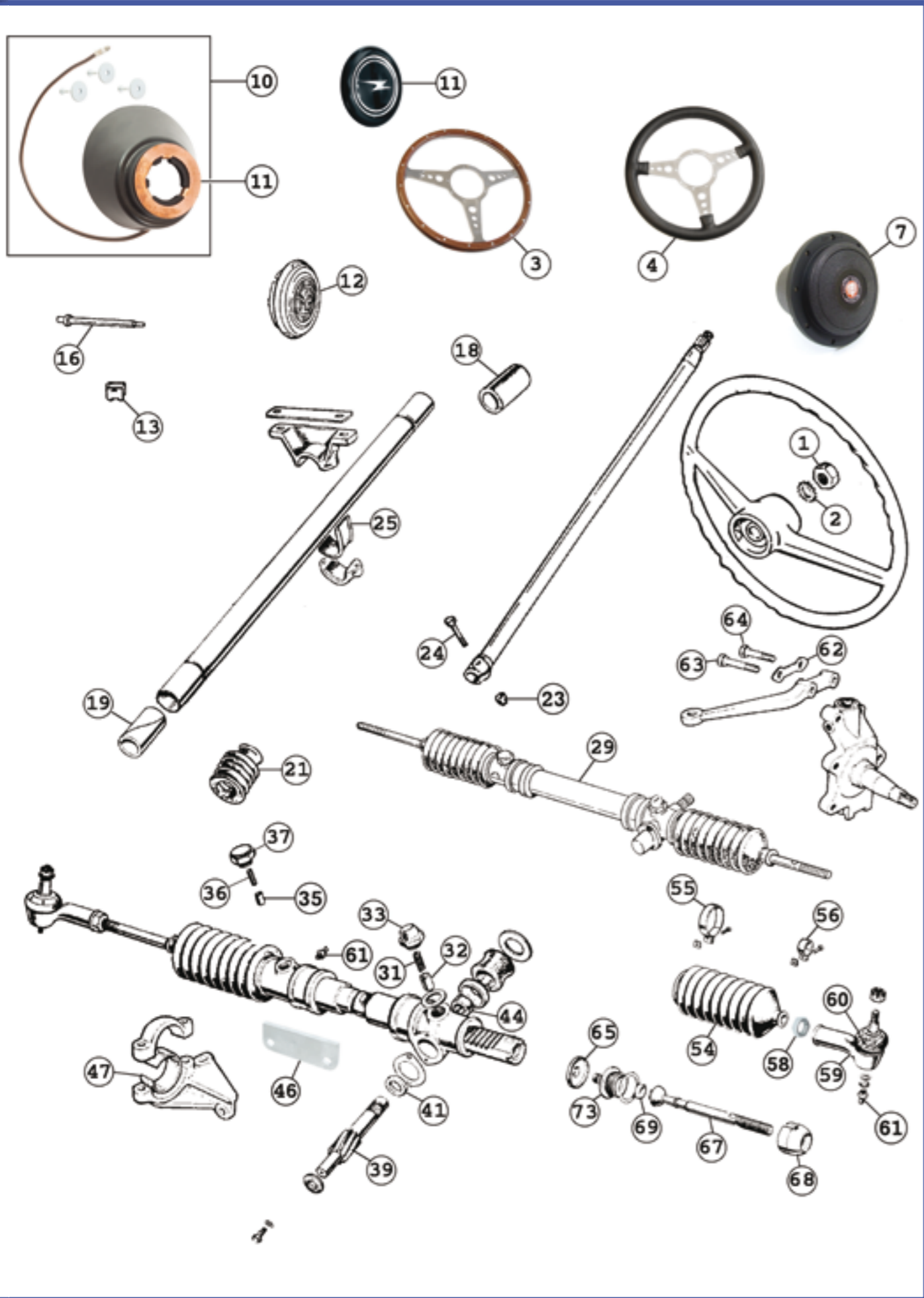
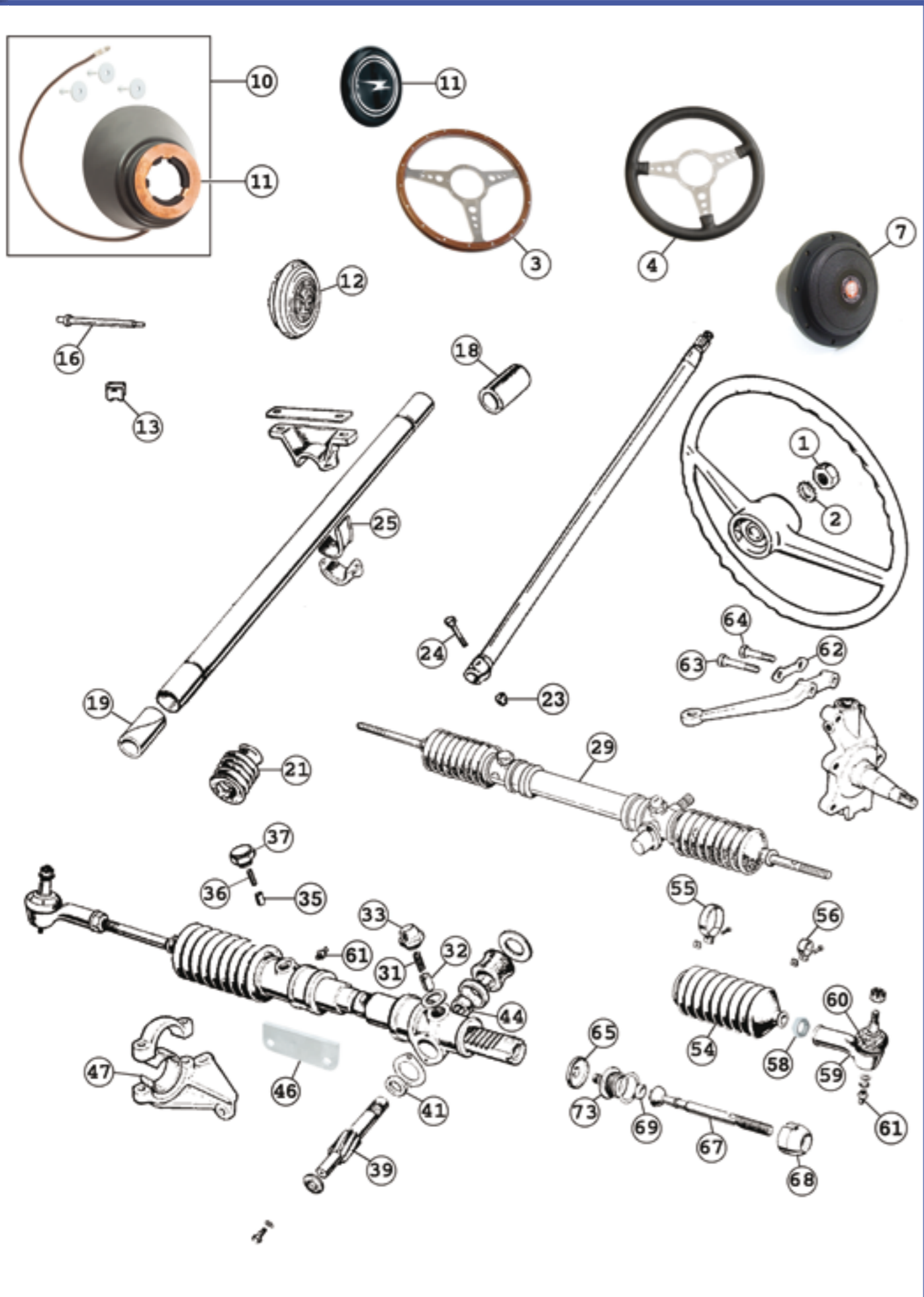


STEERING



No.	Part No.	Description	Application	Notes	Price ex VAT
1	XSTG103	NUT - steering column	MK1-MK2		£2.45
2	XSTG104	STAR WASHER - steering wheel	MK1-MK2		£0.22
3	XSTG105	STEERING WHEEL-Moto Lita(15')	WOOD RIM	USE.STG105	-
3	XSTG105A	STEERING WHEEL-Moto Lita(14')	WOOD RIM	USE.STG105A	-
4	XSTG109	STEERING WHEEL-Moto Lita(15')	LEATHER	USE.STG107	-
4	XSTG109A	STEERING WHEEL-Moto Lita(14')	LEATHER	USE.STG107A	-
7	XSTG112	BOSS-for wood or leather rim	MK1-MK2		£53.00
7	XSTG113	BOSS-for wood or leather rim	MK3-MK4		£53.00
10	XSTG116	DASH CONE - RHD	MK1-MK2		£89.95
10	XSTG117	DASH CONE - LHD	MK1-MK2		£89.95
11	XSTG118	HORN PUSH-SPRITE	MK1-MK2		£28.30
12	XSTG119	HORN PUSH-MIDGET	MK1	MIDGET	£31.95
13	XSTG120	CLIP-horn push	MK1-MK2		£0.29
15	XSTG122	SLIP RING	MK1-MK2		£13.50
16	XSTG123	BRUSH CONTACT-HORN PUSH	MK1-MK2		£7.50
18	XSTG125	FELT BUSH-steering column-top	MK1 TO HAN5.48626		£2.25
18	XSTG126	FELT BUSH-steering column-top	MK1 ON	USE.STG118	-
19	XSTG127	FELT BUSH-steering col.-bottm	MK1-MK2		£2.17
21	XSTG130	DUST EXCLUDER-RUBBER-stg.col.	MK1-MK2		£2.10
23	XSTG134	STIFF NUT - pinch bolt	MK1-MK4		£0.85
24	XSTG135	PINCH BOLT-steering column	MK1-MK4		£1.15
25	XSTG136	RUBBER STRIP-column clamp	MK1-MK4	USE.STG168	-
29	XSTG140	STEERING RACK-RHD-recon	MK1-MK4	EXCHANGE ONLY £100 surcharge	£55.00
29	XSTG140N	STEERING RACK-RHD-NEW	MK1-MK4		£128.50
29	XSTG141	STEERING RACK-LHD-recon	MK1-MK4	EXCHANGE ONLY £100 surcharge	£55.00
29	XSTG141N	STEERING RACK-LHD-NEW	MK1-MK4		£128.50
31	XSTG143	SPRING - pinion housing	MK1-MK4		£6.10





No.	Part No.	Description	Application	Notes	Price ex VAT
32	XSTG144	DAMPER - pinion housing	MK1-MK4		£8.75
33	XSTG145	CAP - pinion housing	MK1-MK4		£10.80
35	XSTG147	DAMPER - secondary	MK1-MK4		£3.55
36	XSTG148	SPRING - secondary	MK1-MK4		£4.95
37	XSTG149	CAP - secondary	MK1-MK4		£1.35
39	XSTG151	PINION-STG RACK-L.H.D	MK1-MK4		£23.50
41	XSTG153	TOP THRUST	MK1-MK4		£2.00
44	XSTG156	OIL SEAL-pinion	MK1-MK4		£1.20
46	XSTG158	SEATING-rack to mounting brkt	MK1-MK4		£4.25
47	XSTG159	SEATING-rack to mounting brkt	MK1-MK4		£0.95
54	XSTG170	GAITER-RUBBER-steering rack	MK1-MK4		£4.85
55	XSTG171	CLIP-LARGE-rubber gaiter	MK1-MK4		£1.18
56	XSTG172	CLIP-SMALL-rubber gaiter	MK1-MK4		£0.49
58	XSTG174	LOCK NUT - track rod	MK1-MK4		£0.52
59	XSTG175	TRACK ROD END-complete	MK1-MK4		£8.35
60	XSTG176	GAITER-track rod end	MK1-MK4		£1.25
61	XSTG177	GREASE NIPPLE-track rod end+ steering rack	MK1-MK4		£0.96
62	XSTG180	LOCKWASHER-steering arm	MK1-MK4		£1.20
63	XSTG181	BOLT-steering arm-long	MK1-MK4	USE.XSUF148	-
64	XSTG182	BOLT-steering arm-short	MK1-MK4	USE.XSUF149	-
65	XSTG183	LOCK TAB	MK1-MK4		£3.65
68	XSTG186	FEMALE BALL HOUSING	MK1-MK4		£82.50
69	XSTG187	BALL SEAT	MK1-MK4		£12.45
73	XSTG195	MALE BALL HOUSING	MK1-MK4		£41.00

